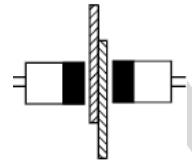


DOUBLE SHEET DETECTOR (DSD)

Double sheet sensor is used to detect the doubling of the metal sheet thickness to its original thickness . The sensor is used for a sheet thickness of 0.2 mm to 1 mm .

The sensor consists of the following components :

- 1-Transmitter : 2 wire
- 2-Receiver : 3 wire
- 3-Power supply : It has two potentiometers , COARSE for large tuning and FINE for accurate tuning .



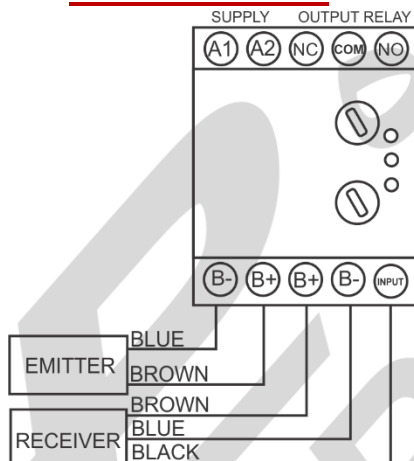
SENSOR PERFORMANCE :

to set the device , we first place a single - layer sheet between the transmitter and receiver . then rotate the COARSE potentiometer from the minimum value clockwise to turn the red led off . at this point , the machine is ready to detect two or more equal thicknesses . The FINE potentiometer can use for more More precisely adjusting .

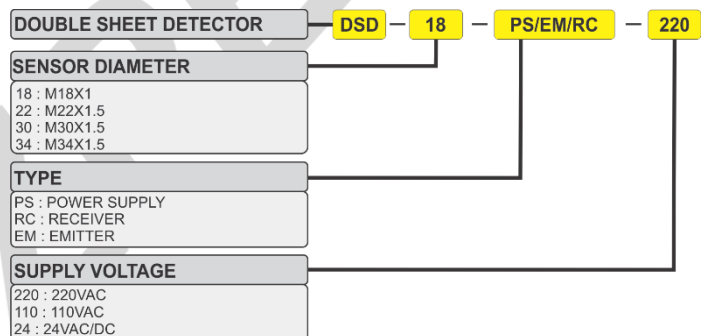
DEVICE LEDs :

- Yellow LED (CONDITION) : It indicates that the receiver is connected and its being healthy .
- Green LED (POWER) : It indicates that the power supply is connected .
- Red LED (DOUBLE SHEET) : It indicates double sheet and activating the output relay .

HOW TO WIRING



ORDER CODE



TECHNICAL DATA

Supply voltage	220VAC or 110VAC or 24VAC/DC
Output voltage	12VDC
Output relay	250V 5A
Receiver indicator	YELLOW LED
Output indicator	RED LED
Power indicator	GREEN LED
Case size	80x45x108